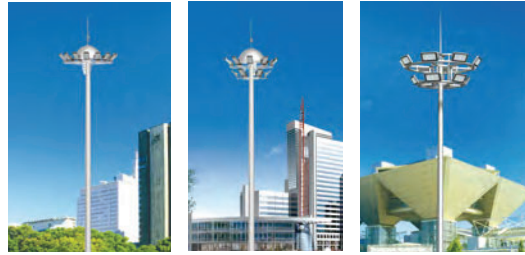


## 高杆灯系列

High mast lighting series



扬州泰州机场高杆灯  
YANGZHOU TAIZHOU AIRPORT HIGH MAST LIGHTING PROJECT



BDG-0001

BDG-0002

BDG-0003

### 产品说明 / PRODUCT DESCRIPTION

● 照明面积大，照明效果好，光源集中，光照均匀，眩光小，易于控制、维修。

- 适用场所：城市广场、车站、码头、公路、体育场、立交桥等。
- 灯杆为优质钢板经模压成多棱锥形插接式钢杆，经热镀锌防腐处理。
- 灯盘骨架采用优质不锈钢制成。
- 紧固件螺栓、螺母为不锈钢。
- 光源：钠灯、LED
- 基础由本厂另外提供图纸制作，安装时必须保证灯体安全接地。

● Large area lighting, lighting effect is good, light source centralized, uniform illumination, glare is small, easy to control, repair.

● Applicable places: City Square, station, wharf, highway overpass, stadium, etc.

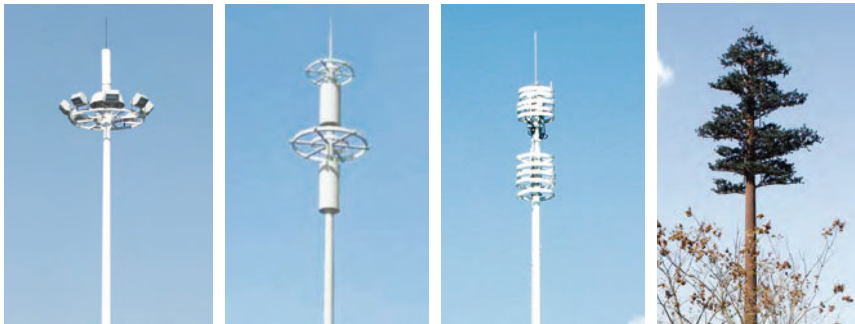
● Lamp pole is the high quality steel plate by moulding and into pyramid shaped inserting type steel, hot-dip galvanized anti-corrosion treatment.

- The lamp disc skeleton made of high-quality stainless steel.
- Fastener bolts, nuts for stainless steel.
- Source: Sodium lamp, LED.
- The foundation also provided by the factory production drawings, installation must ensure that the lamp body safety grounding



## 通信塔、电力杆系列

### Communication Tower Electric Pole Series



BDTX-0001

BDTX-0002

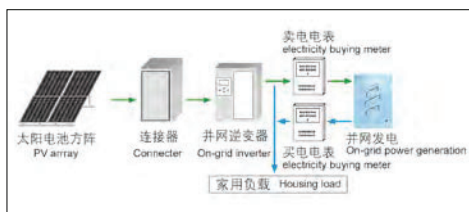
BDTX-0003

BDTX-0004





### 太阳能并网发电系统的组成及作用 SOLAR POWER SYSTEM COMPOSITION AND FUNCTION



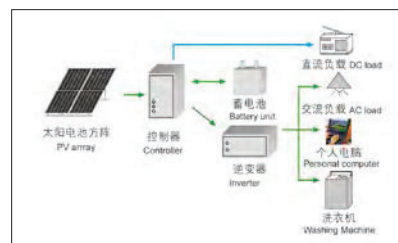
光伏并网发电系统通过把光能转化为电能，不经过蓄电池储能，直接通过并网逆变器，把电能送上电网。光伏并网发电是光伏电源的发展方向，代表了21世纪最具吸引力的能源利用技术。并网逆变器采用最大功率跟踪技术，最大限度地把光伏电池转换的电能送入电网。

光伏并网发电系统由光伏组件、并网逆变器、计量装置及配电系统组成。太阳能通过光伏组件转化为直流电力，再通过并网逆变器将直流电能转化为与电网同频率、同相位正弦波电流，一部分给当地负荷供电，剩余电力馈入电网。并网逆变器通过内部的功率调节器将太阳能电池发出的电力最大限度地回馈给电网，由于电网本身可吸收巨大能量，因此并网发电系统无须增设蓄电池，从而节省系统投资、减少维护，具有广阔的应用前景！

Grid-connected PV system, through the light into electricity, without a battery energy storage, grid-connected inverter directly into electricity grid brought. Grid-connected solar photovoltaic power generation is the development direction represents the most attractive in the 21st century energy utilization technologies. Grid-connected inverter with maximum power point tracking technology, to maximize the photovoltaic cells to convert electrical energy into the grid.

Grid-connected PV system consists of PV modules, grid-connected inverter, metering devices and distribution system components. Solar energy through PV modules into DC power, and through the grid-connected inverter with the DC power can be converted into the same frequency, in-phase sine wave current, part of the load to the local power supply, surplus electricity fed into the grid. Grid-connected inverter internal power regulator will be issued by the solar cells to maximize the power back to the grid, because grid itself can absorb the tremendous energy and, therefore, no additional battery power system network, thereby saving system investment, reduce maintenance, with broad application prospects!

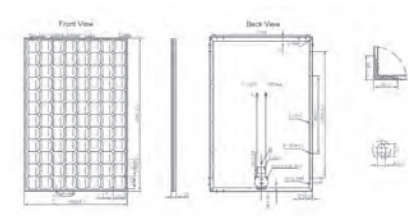
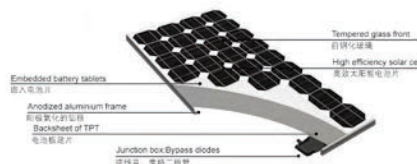
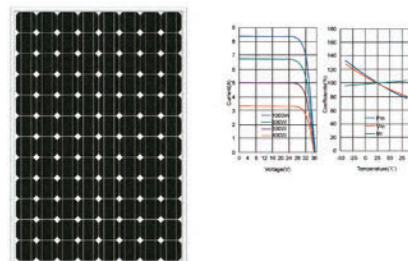
### 太阳能离网发电系统的组成及作用 FUNCTIONS OF THE COMPONENTS OF SOLAR POWER SYSTEMS



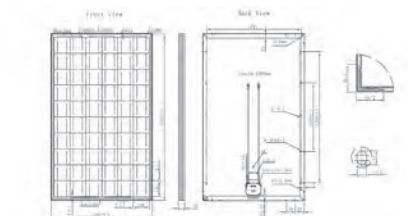
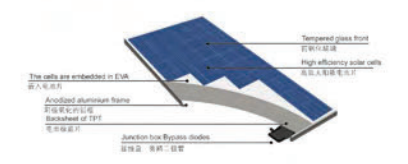
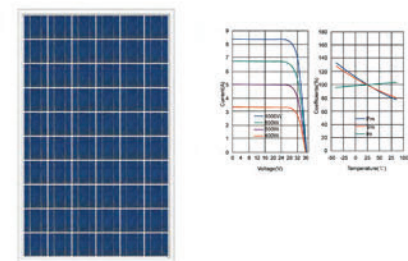
离网太阳能光伏发电是指太阳能光伏发电不与电网连接的发电方式，典型特征为需要蓄电池来存储夜晚用电的能量。离网太阳能光伏发电在民用范围内主要用于边远的乡村、牧区、海岛、高原、沙漠的农牧民提供照明、收看电视、收听广播等的基本生活用电；在工业范围内主要用于通讯、卫星广播电视中继站、太阳能水泵、航标灯、输油输气管道阴极保护、气象站、公路道班以及边防哨所等提供电源，在具备风力发电和小水电的地区还可以组成混合发电系统，如风力发电、太阳能发电补充系统等。

Off-grid solar-energy photovoltaic power generation refers to the mode of power generation that is not connected to the electric grid. The typical feature is that it has the storage battery for storing the electric energy for use in the night. In the civilian field, the off-grid system is mainly used in the remote villages, farming areas, sea islands, plateaus and deserts for the purpose of lighting, TV, radio and other basic needs of life; in the industrial fields, it is mainly used for communication, relay of satellite broadcast and TV, solar-energy water pumps, navigation marks, anode protection of oil pipelines, weather stations, highways and check points at borders. In the regions where wind power generation and small-sized hydraulic power generation are available, combined power generation system can be set up, e.g. wind power generation and solar power generation.

### 单晶硅太阳能电池板 MONO-CRYSTALLINE SOLAR PANEL



### 多晶硅太阳能电池板 POLY-CRYSTALLINE SOLAR PANEL



## 太阳能风光互补路灯 /SOLAR WIND HYBRID ROAD LIGHT



BDTYD-0001



BDTYD-0002



BDTYD-0003



BDTYD-0004

### 特点

- 光源:LED
- 电池板:单晶硅或者多晶硅电池板,使用寿命10年
- 风机功率:400w
- 蓄电池:太阳能专用胶体蓄电池
- 寿命:5年
- 控制器:微电脑智能控制器,防过充,过放,输出短路保护及根据光暗自动控制开关,关灯
- 使用环境:-30度~+60度
- 工作时间:根据路灯具体配置而定
- 高度:8m-10m

### Features

- lighting source: LED
- Solar panel: Monocrystalline or polycrystalline, 10 years life time.
- Rate power of wind generator: 400w
- Storage battery: high efficiency colloid battery, free maintenance
- Service life: 5 year
- Controller: time control and light control, preventing from overcharge and overdischarge, having output short circuit protection.
- Ambient temperature: -30°C ~ +60°C
- Lighting time: subject to exact configuration power, normal over 8 hours.
- Height: 8m-10m

## 太阳能道路灯 /SOLAR ROAD LIGHT



BDTYD-0005



BDTYD-0006



BDTYD-0007



BDTYD-0008

### 特点

- 光源:LED
- 电池板:单晶硅或者多晶硅电池板,使用寿命10年
- 蓄电池:太阳能专用胶体蓄电池
- 寿命:5年
- 控制器:微电脑智能控制器,防过充,过放,输出短路保护及根据光暗自动控制开关,关灯
- 使用环境:-30度~+60度
- 工作时间:根据路灯具体配置而定
- 高度:5m-8m

### Features

- lighting source: LED
- Solar panel: Monocrystalline or polycrystalline, 10 years life time.
- Storage battery: high efficiency colloid battery, free maintenance
- Service life: 5 year
- Controller: time control and light control, preventing from overcharge and overdischarge, having output short circuit protection.
- Ambient temperature: -30°C ~ +60°C
- Lighting time: subject to exact configuration power, normal over 8 hours.
- Height: 5m-8m

## LED 路灯 /LED STREET LAMP



BD-LED-DL0001



BD-LED-DL0002



BD-LED-DL0003



BD-LED-DL0004

### 材料说明

- 灯型主体、杆体材质为金属钢件,经热镀锌喷塑防腐处理;
- 灯罩采用高透光、耐高温、抗变黄的亚克力灯罩;
- 光源采用进口LED芯片,无紫外线和红外线,光效高而稳定;
- 模组采用高导热系数的铝合金散热器,确保LED光源产生的热量更快散发,并能有降低灯具热阻,芯片结温可控制在60度以下,延长LED光源的光衰和芯片的保用寿命;透光罩采用专利技术的二次光学透镜,确保模组出光率高达90%以上;

### Material specification

- Lamp pole is made by metal steel with hot dip galvanized and spray coating treatment;
- Lamp fixture is made by acrylic shade which is highly pervious to light, high temperature resistant, resistance to yellowing.
- The light source is adopted with imported LED chip, no ultraviolet or infrared light, stable with high light efficiency;
- Module using high thermal conductivity aluminum radiator, ensure the LED light source as faster heat transfer, and can reduce the thermal resistance of lamps, chip junction temperature can be controlled under 60 degrees, prolong the droop of LED light source and chip warranty of service life; diffuser adopts the patent technology of secondary optical lens, to ensure that the module light out-coupling efficiently is above 90%.

## 太阳能庭院灯 /SOLAR GARDEN LIGHT



BDTYD-0009



BDTYD-0010



BDTYD-0011



BDTYD-0012

### 特点

- 光源离地高度:3-4m
- 适用光源:大功率LED
- 太阳能电池:高转换率单晶硅或多晶硅太阳能电池组件
- 蓄电池:全密封免维护铅酸蓄电池
- 控制系统:微型电脑智能控制
- 照明时间:6-8小时
- 适用地区:年日照时间大于2200小时的地区
- 环境温度:-20度-60度
- 灯杆材质:为优质钢材,表面热镀锌后喷塑处理

### Features

- Light source height above ground :3-4m
- Suitable light source: high power LED
- solar cells: monocrystalline or polycrystalline silicon with high conversion rate of solar cell modules
- Battery: maintenance free sealed lead-acid batteries
- Control system: micro-computer intelligent control
- Illumination time :6-8 hours
- Application Area: more than 2,200 hours of annual sunshine time of the region
- Ambient temperature: -20 degrees -60 degrees
- Pole material: for high-quality steel, hot dip galvanized surface, after the spray treatment



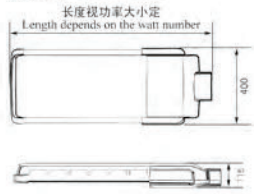
DTK LIGHTING

LED 产品系列  
LED series

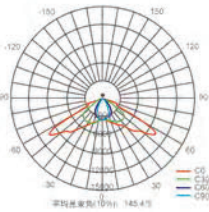
### 变形金刚 TRANSFORMER



#### 结构尺寸 Structure size



#### 配光曲线 Distribution curve



灯具颜色可根据用户要求订制  
Lamps color can be customized according to user requirements



BD-LED-DL0005



BD-LED-DL0006



BD-LED-DL0007

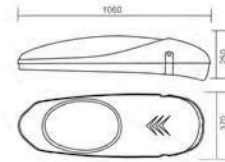


BD-LED-DL0008

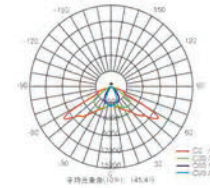
### 东风四号-III DONG FENG NO.4-III



#### 结构尺寸 Structure size



#### 配光曲线 Distribution curve



灯具颜色可根据用户要求订制  
Lamps color can be customized according to user requirements



BD-LED-DL0013



BD-LED-DL0014



BD-LED-DL0015



BD-LED-DL0016



BD-LED-DL0009



BD-LED-DL0010



BD-LED-DL0011

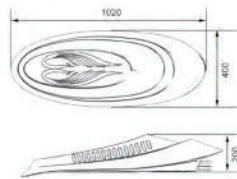


BD-LED-DL0012

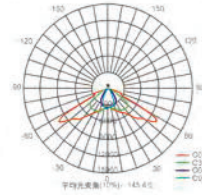
### 凤舞九天 PHONEIX SHOW



#### 结构尺寸 Structure size



#### 配光曲线 Distribution curve



灯具颜色可根据用户要求订制  
Lamps color can be customized according to user requirements



BD-LED-DL0017



BD-LED-DL0018



BD-LED-DL0019

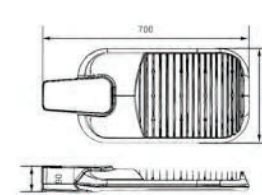


BD-LED-DL0020

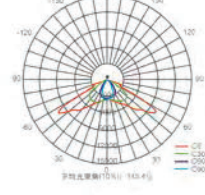
### 东风五号 DONG FENG NO.5



#### 结构尺寸 Structure size



#### 配光曲线 Distribution curve



灯具颜色可根据用户要求订制  
Lamps color can be customized according to user requirements

